

WISE Ver. 1.1 Firmware Upgrade Note

Dear customers,

ICP DAS has recently released the WISE Ver. 1.1 firmware. If your WISE controller firmware version is Ver. 1.05 or earlier and you want to upgrade the firmware to WISE Ver. 1.1, to avoid possible error, please strictly adhere to the steps below for the upgrade process. Thank you!

A. How do I know which WISE Firmware version I am running now ?

Start a Browser and connect to your WISE controller. On the HOME page, you will find the current firmware version for this WISE controller being displayed in "WISE Engine Version" (shown as below).

WISE Engine Version	1.1
OS Version	2.02.9
Module Name	WISE-7126
DI channels	2
DO channels	2
AI channels	6
AO channels	2

B. What's new for WISE Ver. 1.1 firmware?

In WISE v1.1, we provide more useful features as below:

Items		Description
New Hardware Platform	WISE-7105	8-channel Thermistor Input and 4-channel Isolated Output PoE WISE controller.
	WISE-7902	PoE WISE controller; supports FRnet Remote I/O module
New Software Function	CGI Command	Allows to interact with Surveillance Systems.
	Recipe Function	For easily grouping a series of actions
	P2P function	All WISE controllers can freely share their status information such as DI/DO/AI/AO channel value, DI/DO Counter value or Internal Register value to each others in network.
	Calendar UI for Schedule setting	Calendar interface for more convenient Schedule setting

More information, please download document (icp_das_wise_introduction_v1.1en.pdf) from

<http://wise.icpdas.com/Download.html#Manual> for your reference.

C. You will need the following tools:

- WISE Firmware Uploader (Download here: [http://wise.icpdas.com/downloads/utility/WISE Firmware Uploader Setup.exe](http://wise.icpdas.com/downloads/utility/WISE_Firmware_Uploader_Setup.exe))
- WISE Rule Utility (Download here: [http://wise.icpdas.com/downloads/utility/ICP DAS WISE Rule Utility Setup.msi](http://wise.icpdas.com/downloads/utility/ICP_DAS_WISE_Rule_UTILITY_Setup.msi))

D. Download the firmware file:

- WISE Ver. 1.1 firmware (Download here: <http://wise.icpdas.com/Download.html#Firmware> , please download the EXACT firmware file based on the model name for your WISE controller)

E. Firmware Upgrade Steps :

1. Check the Switch Position.

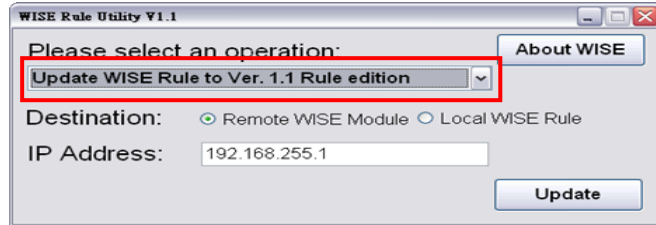
For WISE-71xx or WISE790x, please make sure the Init/Normal switch on the controller has been set to “Normal” position. For WISE-4000, please make sure the Init/Run switch on the controller has been set to “Run” position. Connect the controller to power supply and to the network. The Switch position is shown as below.



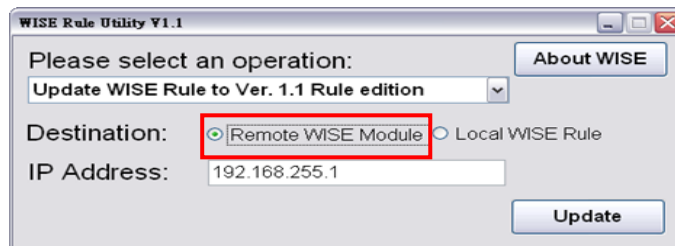
2. Update WISE Rule file to Ver. 1.1 format

Please note: The WISE Ver. 1.1 firmware is not compatible with the WISE rule file generated by old version (Ver. 1.05 or earlier) WISE firmware. So if you want to use WISE Ver. 1.1 firmware, you must update the old version WISE rule file to Ver. 1.1 format first. The WISE rule file update process is as follows:

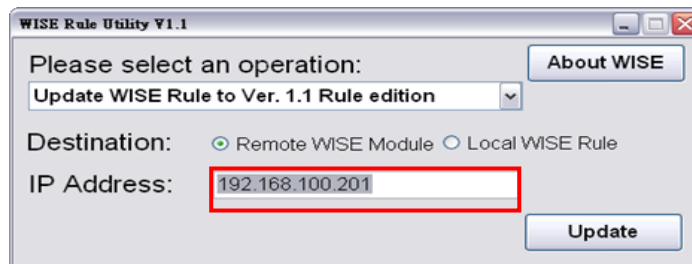
- i. Install WISE Rule Utility, and launch the program.
- ii. Select “Update WISE Rule to Ver. 1.1 Rule edition” from the dropdown list.



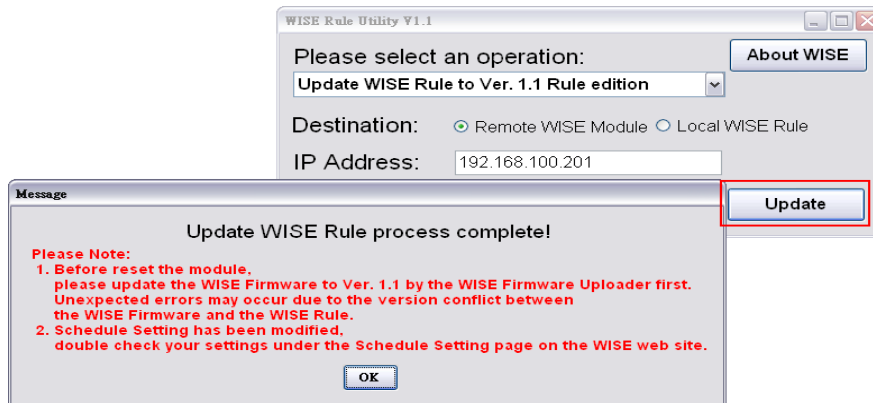
- iii. Select the destination to be “Remote WISE Module”.



- iv. Input your WISE controller IP Address in the text box.



- v. Click the Update button to execute the operation. WISE Rule Utility will automatically update the WISE rule file from old version to Ver. 1.1 format.

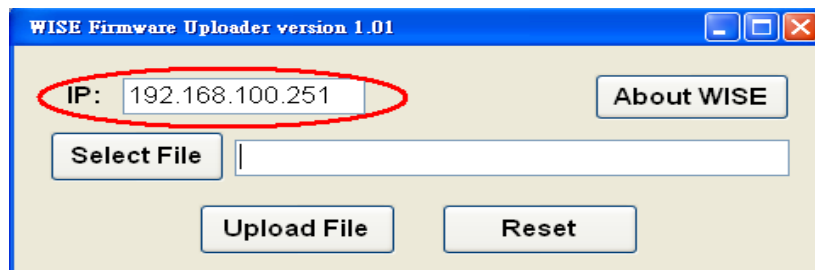


Click the OK button to execute the operation.

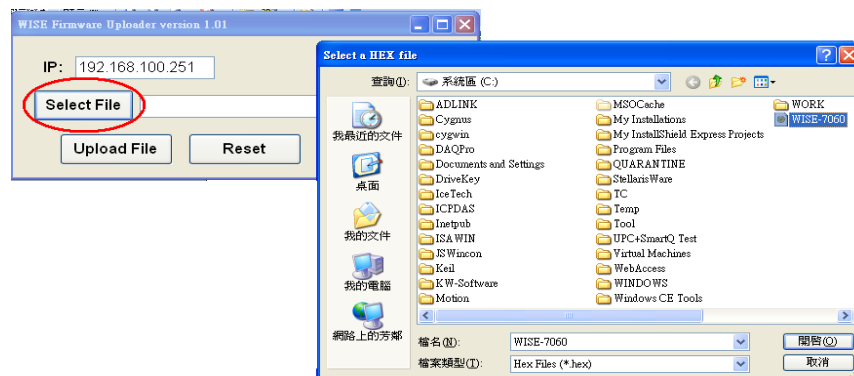
Please note: After WISE rule file update process is completed, please update WISE firmware to Ver. 1.1 as follows. DON'T reboot the WISE module.

3. Update WISE controller firmware to Ver. 1.1

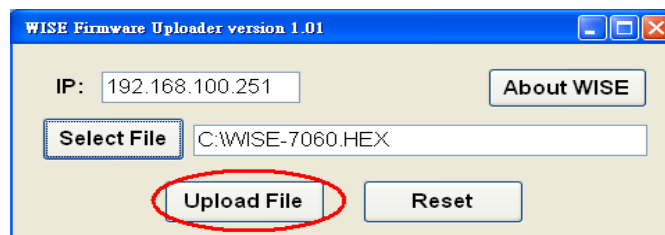
- i. Install WISE Firmware Uploader, and launch the program.
- ii. Enter the IP address of the WISE controller that you are going to update the WISE firmware.



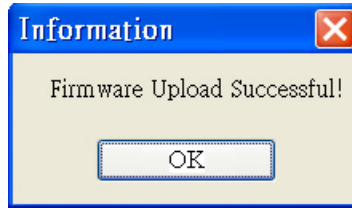
- iii. Click "Select File" button; browse the firmware file through the File Dialog Box to select the appropriate WISE firmware Ver. 1.1 file.



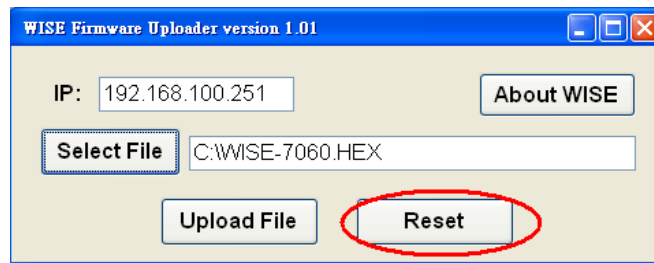
- iv. Click "Upload File" button to start update WISE firmware v1.1 to the WISE controller.



The utility will display the status of WISE firmware update progress. When the WISE firmware update process is completed, a pop-up window will appear to inform the user. Close the window to finish it.



- v. Click "Reset" button to reboot the WISE controller. The new updated WISE firmware and WISE rule file will take effect after rebooting the controller.



Please note: For WISE Ver. 1.1 provides the new calendar UI feature for up to one year Schedule setting, it is not compatible with the old version WISE rule file format. If your old version WISE rule file include Schedule setting, please make sure to convert the Schedule setting to the new WISE rule file Ver. 1.1 format.