



# WISE-5231M-4GE/WISE-5231M-4GC Quick Start

v1.0, October 2017

## Technical Support

### WISE-5231M-4GE / WISE-5231M-4GC User Manual:

CD:\WISE-52xx\document\user manual

<http://wise.icpdas.com/Download.html>

### WISE-5231M-4GE / WISE-5231M-4GC Website:

<http://wise.icpdas.com>

## What's In the Box?

In addition to this document, the package includes the following items:



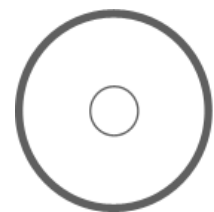
WISE-5231M-4GE  
WISE-5231M-4GC



GSM Antenna  
(ANT-421-04)



microSD card and  
micro SD/SD  
adapter



Software  
Utility CD



Screw Driver  
2.4mm (1C016)



44 mm DIN-Rail  
Clip



M3x6L Screw \* 4



Pin Terminal \* 16

# 1

## Configuring the boot mode

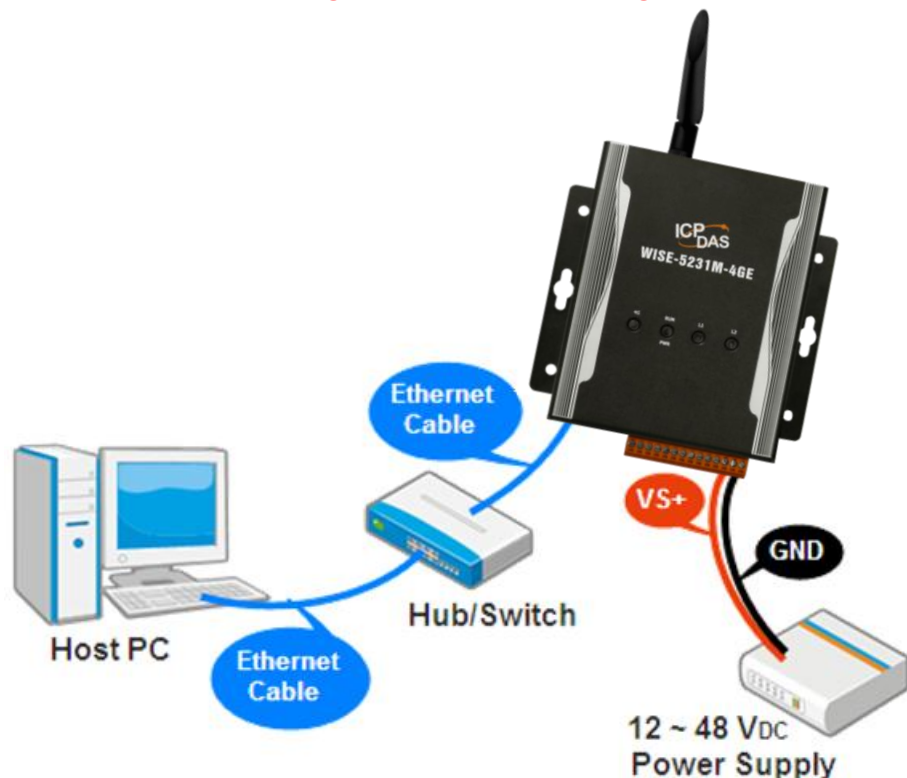
Before starting WISE-5231M-4GE/4GC at the first time, be sure that the switch is placed in the "0" position.



# 2

## Connect to PC, Network and Power

The WISE-5231M-4GE/4GC is equipped with an RJ-45 Ethernet port for connection to an Ethernet hub/switch and PC. You can also link directly the WISE-5231M-4GE/4GC to PC with an Ethernet cable. **After power is connected, please wait one minute for WISE-5231M-4GE/4GC start-up procedure. When the "RUN/PWR" light starts flashing, it represents the boot is complete.**



# 3

## Using Browser to Assign a New IP

The WISE-5231M-4GE/4GC is an Ethernet controller, which comes with a default IP setting; therefore, you must first assign a new IP setting to the LAN1 port of WISE-5231M-4GE/4GC. The factory default IP settings of WISE-5231M-4GE/4GC are as follows:

Item	Default
IP Address	192.168.255.1
Subnet Mask	255.255.0.0
Gateway	192.168.0.1
DNS Server	8.8.8.8(Default: Google DNS Server)

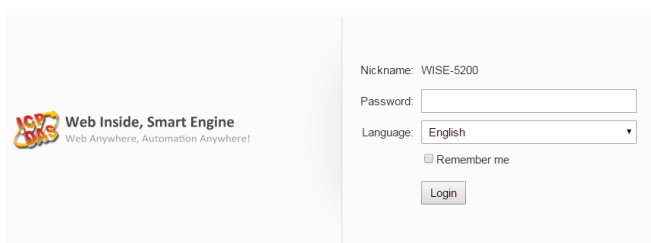
Follow the following steps for WISE-5231M-4GE/4GC new IP setting:

Step1: Change the PC's IP setting same as WISE-5231M-4GE/4GC's IP domain. For example, set PC's IP as 192.168.255.10.

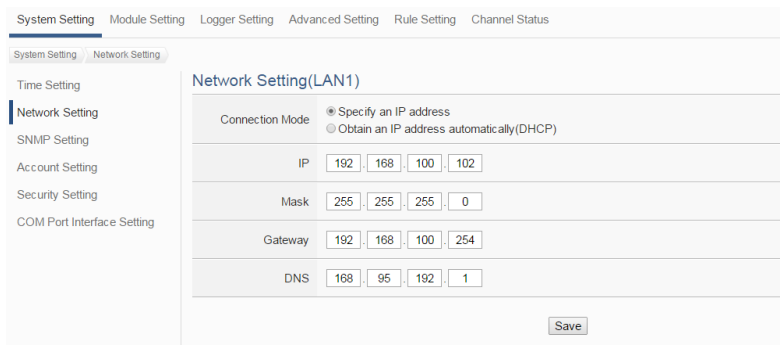
Step2: Make sure the PC and WISE-5231M-4GE/4GC is connecting through Ethernet.

Step3: Open a PC side browser, and type in the URL address (http://192.168.255.1) of the WISE-5231M-4GE/4GC to connect the Web Server in WISE-5231M-4GE/4GC.

Step4: Use default Administrator password "Admin" to login the system.



Step5: Please follow the sequence【 System Setting 】→【 Network Setting 】→ 【 Network Setting(LAN1) 】 to change the IP setting of WISE-5231M-4GE/4GC.



Step6: After complete the IP setting, please save it, and then the new IP setting will take effect.

# 4

## Go to WISE-5231M-4GE/4GC Web Site to edit Control Logic

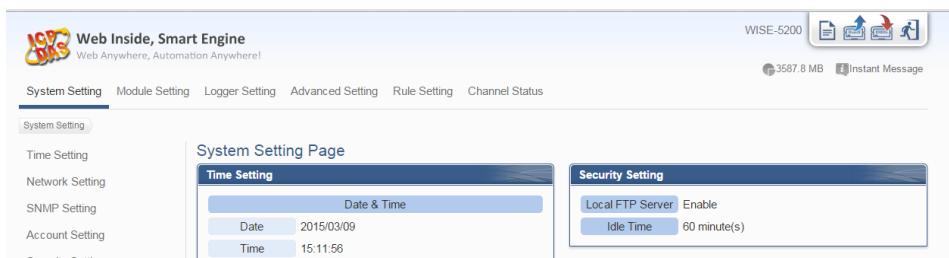
Please follow the steps below to implement IF-THEN-ELSE control logic on ICP DAS WISE-5231M-4GE/4GC controllers:

### Step1: Open a browser, and type in the URL address of the WISE-5231M-4GE/4GC

Open a browser and type in the URL address(The new IP setting) of the WISE-5231M-4GE/4GC in the address bar. Make sure the IP address is accurate.

### Step2: Get on the WISE-5231M-4GE/4GC web site

Get on the WISE-5231M-4GE/4GC web site. Login with the default password “Admin”. Implement the control logic configuration in the order: 【Module Setting】 → 【Advanced Setting】 → 【Rule Setting】 → 【Save】 , then complete the IF-THEN-ELSE rule editing.



### Step3: For more detail information, please refer to WISE-5231M-4GE/4GC User Manual



# WISE-5231M-4GE/WISE-5231M-4GC 快速上手指南

v1.0, October 2017

## 技術支援

**WISE-5231M-4GE / WISE-5231M-4GC 使用手冊：**

CD:\WISE-52xx\document\user manual

<http://wise.icpdas.com/Download.html>

**WISE-5231M-4GE / WISE-5231M-4GC 產品網頁：**

<http://wise.icpdas.com>

## 產品內容

除了本『快速上手指南』外，此產品內容還包括以下配件：



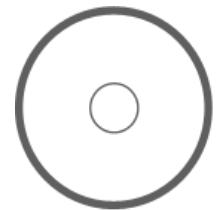
WISE-5231M-4GE  
WISE-5231M-4GC



GSM 外接天線  
(ANT-421-04)



microSD 卡及  
micro SD/SD 轉接卡



軟體工具光碟



螺絲起子 2.4mm  
(1C016)



44 mm DIN-Rail  
導軌固定架



M3x6L 螺絲 \* 4



歐式壓著端子 \* 16

# 1 檢視啟動模式

在第一次啟動 WISE-5231M-4GE/4GC 前，請先確認旋轉式開關的位置在“0”。



# 2 連接 PC 主機、網路及電源

WISE-5231M-4GE/4GC 配有標準的網路接口 RJ-45，可透過網路集線器/交換器與 PC 連接，也可直接連到 PC 的網路接口。接上電源後，

WISE-5231M-4GE/4GC 開機程序須等待約一分鐘，待"RUN/PWR"燈開始閃爍則代表開機完成，可進行連線與設定。



# 3

## 設定 WISE-5231M-4GE/4GC 的 IP 位址

WISE-5231M-4GE/4GC 在出廠時會統一預設網路設定值，使用者可以依照下列步驟自行變更網路設定。網路出廠預設值為：

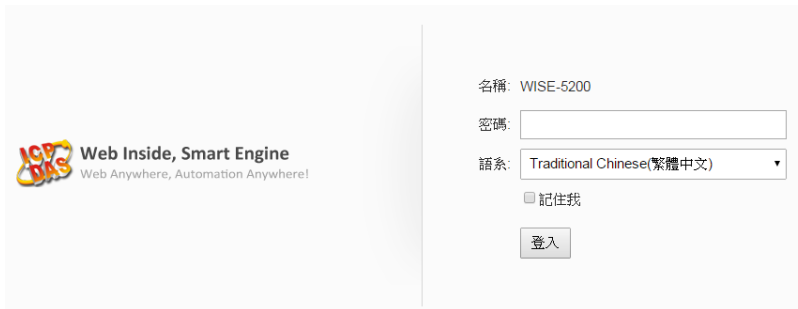
項目	預設值
IP 位址	192.168.255.1
子網路遮罩 (Subnet Mask)	255.255.0.0
通訊閘道 (Gateway)	192.168.0.1
DNS Server	8.8.8.8(預設為 Google DNS Server)

步驟 1：將 PC 的網路設定更改為與 WISE-5231M-4GE/4GC 相同網路區段。例如 IP：192.168.255.10

步驟 2：確認 WISE-5231M-4GE/4GC 與 PC 已透過網路正確連接。

步驟 3：開啟 PC 端的瀏覽器並於網址列輸入 <http://192.168.255.1>。

步驟 4：輸入管理者預設密碼“Admin”進行登入。



步驟 5：登入成功後至【系統參數設定】→【網路設定】→【網路設定(LAN1)】，根據實際網路環境更改網路設定。



步驟 6：儲存成功後將 WISE-5231M-4GE/4GC 連接至實際網路環境。

# 4

## 前往 WISE-5231M-4GE/4GC 網頁進行邏輯規則設定

使用者透過 WISE-5231M-4GE/4GC 所提供的網頁，只需使用滑鼠點選設定，即可完成控制器上的 I/O 模組連接與工作邏輯的規劃。

### 步驟 1：開啟瀏覽器，填入 WISE 模組 IP 作為瀏覽器的 URL 位址

開啟電腦上的瀏覽器，輸入 WISE-5231M-4GE/4GC 的 IP 作為 URL 位址(如有重新設定 IP，請確認所輸入 IP 是否正確)。

### 步驟 2：進入 WISE-5231M-4GE/4GC 的設定頁面

進入 WISE-5231M-4GE/4GC 所提供的參數設定頁面，使用預設密碼“Admin”登入後，僅需依照首頁上的設定流程：【模組設定】→【進階功能設定】→【邏輯規則設定】→【寫入設定】，即可完成 WISE 控制器的邏輯規則編排。

The screenshot displays the 'System Parameter Setting Page' (系統參數設定頁面) of the WISE-5200 controller. The interface is in Chinese and includes a navigation menu on the left with options like 'System Parameter Setting', 'Module Setting', 'Recorder Setting', 'Advanced Function Setting', 'Logic Rule Setting', and 'Real-time Information Display'. The main content area is divided into several sections:

- 時間設定 (Time Setting):** Includes fields for 'Date' (2015/03/09), 'Time' (15:10:44), and 'Time Synchronization' (時間校時) with a 'Function Status' (功能狀態) set to 'Disabled' (停用).
- 網路設定 (Network Setting):** Shows LAN1 configuration with IP (192.168.100.102), Subnet Mask (255.255.255.0), Gateway (192.168.100.254), and DNS Server IP (168.95.192.1). It also lists connection ports for Web Server (80), Modbus TCP (502), and Modbus NetID (1), along with Dynamic DNS (DDNS) server settings.
- 安全設定 (Security Setting):** Features 'Local FTP Server' (本機FTP伺服器) set to 'Enabled' (啟用) and a 'Idle Time' (閒置時間) of 60 minutes.
- COM Port Interface Setting (COM Port介面設定):** Configures three COM ports: COM2 (Disabled), COM3 (Modbus RTU, 115200 bps), and COM4 (DCON device, 9600 bps).

### 步驟 3：設定流程中的細節，請參照 WISE-5231M-4GE/4GC 操作手冊