

WISE-52xx Utility Quick Start

[Version 1.0.1]



ICP DAS CO., LTD.

泓格科技股份有限公司

Warning

ICP DAS Inc., LTD. assumes no liability for damages consequent to the use of this product. ICP DAS Inc., LTD. reserves the right to change this manual at any time without notice. The information furnished by ICP DAS Inc. is believed to be accurate and reliable. However, no responsibility is assumed by ICP DAS Inc., LTD. for its use, or for any infringements of patents or other rights of third parties resulting from its use.

Copyright and Trademark Information

© Copyright 2015 by ICP DAS Inc., LTD. All rights reserved worldwide.

Trademark of Other Companies

The names used for identification only maybe registered trademarks of their respective companies.

License

The user can use, modify and backup this software on a single machine. The user may not reproduce, transfer or distribute this software, or any copy, in whole or in part.

Table of Contents

1	System Description	1
2	Before Installation.....	2
3	Software Installation	3
4	User Interface Introduction	5
4.1	Tool Bar	6
4.1.1	Changing Display Language.....	6
4.1.2	Open List File / Save List File	6
4.1.3	Scan WISE-52xx.....	6
4.1.4	Check WISE-52xx Info.....	7
4.1.5	Save Status Log.....	7
4.2	WISE-52xx List Area.....	7
4.2.1	Editing WISE-52xx List	7
4.2.2	WISE-52xx List Operation	7
4.2.3	The Network Setting of WISE-52xx.....	8
4.2.4	Launch Browser	8
4.3	Function Area.....	9
4.3.1	Firmware Update	9
4.3.2	Rule Update/Backup	9

1 System Description

This document is intended to provide guidelines for ICP DAS WISE-52xx Utility software tool. This software tool has to be installed on PC and it enables to perform the following functions on WISE -52xx series controllers via Ethernet :

- (1) Firmware Update
- (2) Rule File Update and Backup

Please refer to the following chapter for more detail.

2 Before Installation

Before installing ICP DAS WISE-52xx Utility, please finishing installation of the WISE-52xx hardware, and make sure all wiring connections are accurate (e.g., please refer to the user manual of WISE-52xx). The WISE-52xx Utility requires the .NET framework version 2.0 (or above version) to be installed on the target computer. Please follow the link below to get the framework package directly from Microsoft, if required.

- Download Microsoft .Net Framework Version 2.0 :

Link 1:

<http://www.microsoft.com/en-us/download/details.aspx?id=1639>

Link 2:

<http://www.microsoft.com/en-us/download/details.aspx?id=16614>

- Download Microsoft .Net Framework Version 3.5 :

Link 1:

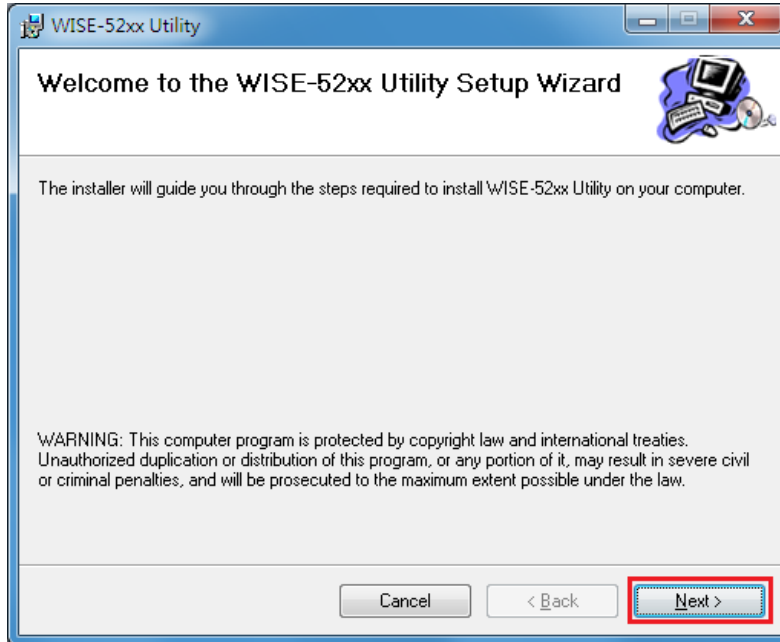
<http://www.microsoft.com/en-us/download/details.aspx?id=21>

Link 2:

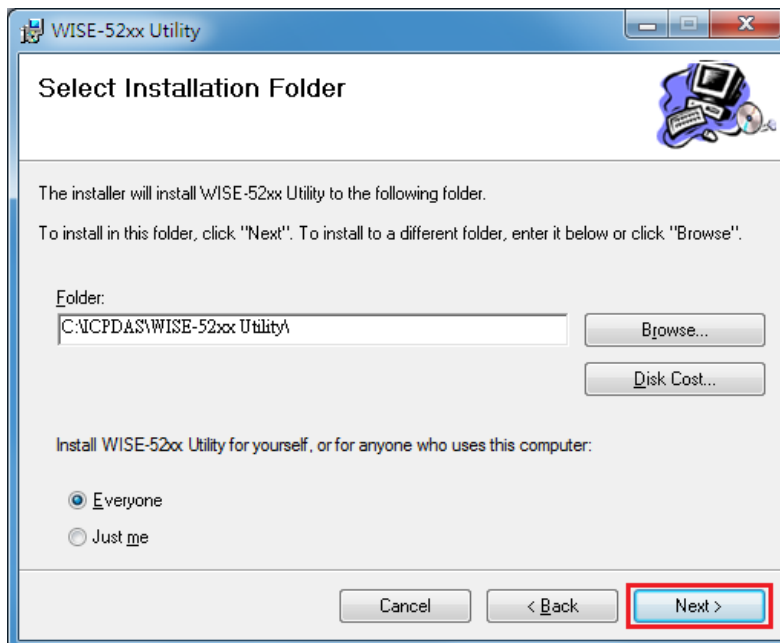
<http://www.microsoft.com/en-us/download/details.aspx?id=22>

3 Software Installation

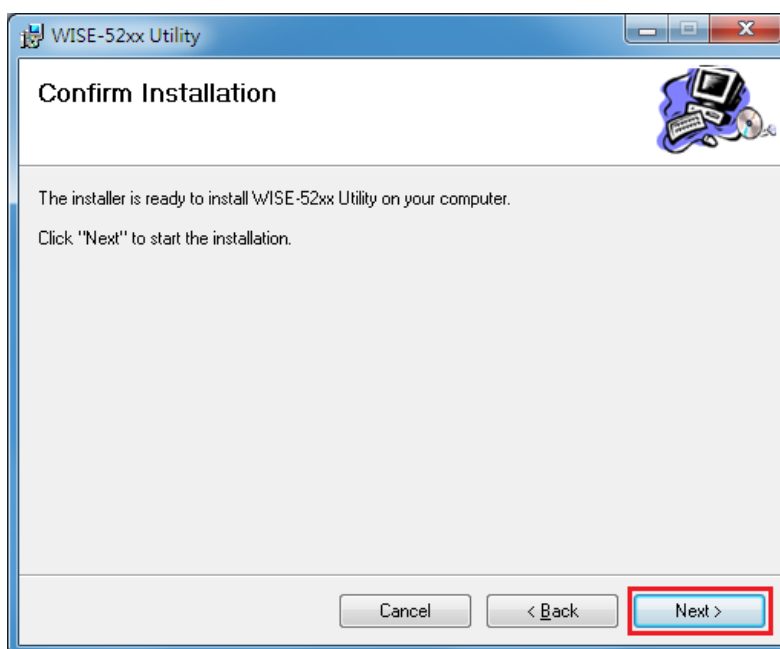
Please contact ICP DAS service or visit ICP DAS WISE Web site to obtain the latest version of the ICP DAS WISE-52xx Utility installer. Double click the ICP DAS WISE-52xx Utility installer to run the installation. Click [Next] to continue.



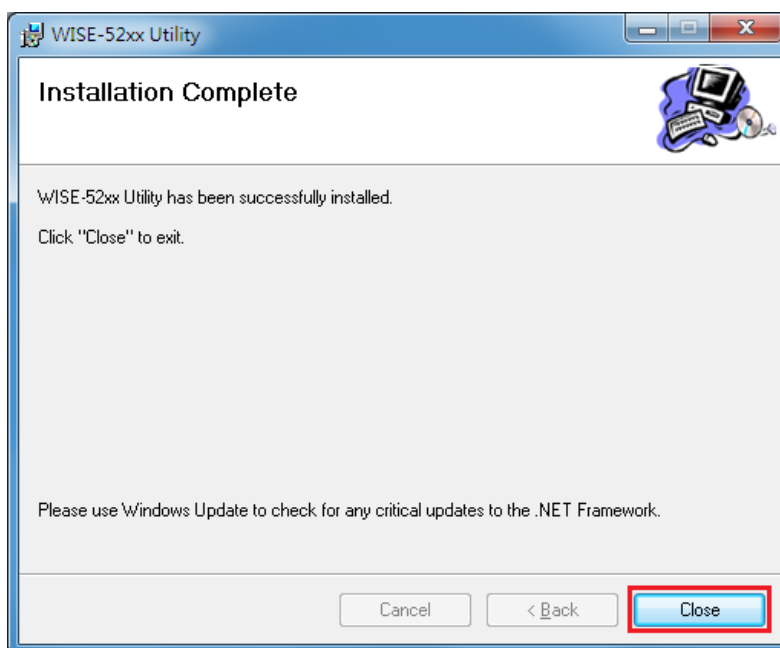
On [Select Installation Folder] page, input path or browse through file dialog box to select the destination folder and select the software user option, click [Next] to continue.



Make sure the settings are accurate. Click [Next] to start the installation.



When the installation process is completed, click [Close] to finish installing program.



After the installation is completed, you will find the WISE-52xx Utility Shortcut on the desktop and in the program menu: [Start] → [All Programs] → [ICPDAS] → [WISE-52xx Utility]

4 User Interface Introduction

The interface of WISE-52xx Utility software tool is shown as follow :

- **Tool Bar**

Provide quick access to various functions:

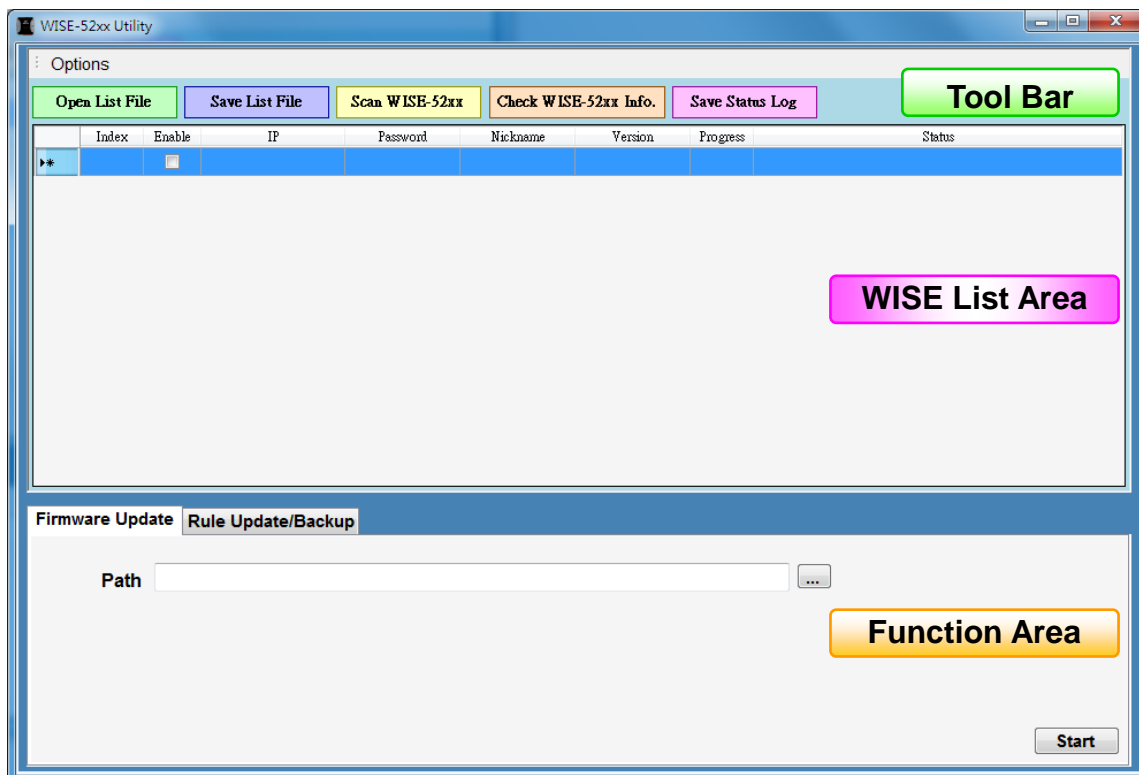
- ◆ Changing Display Language
- ◆ Open WISE-52xx List File
- ◆ Save WISE-52xx List File
- ◆ Scan WISE-52xx
- ◆ Check WISE-52xx Info.
- ◆ Save Status Log

- **WISE List Area**

The user can edit the lists of WISE-52xx controllers in the WISE List Area.

- **Function Area**

The user can perform operations such as Firmware Update and Rule Operation in the Function Area.

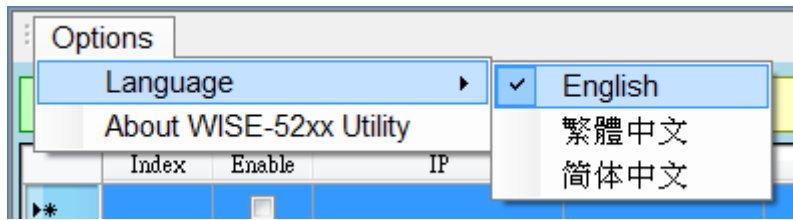


Please refer to the following sections for more detailed information.

4.1 Tool Bar

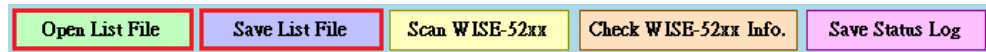
4.1.1 Changing Display Language

The user can click [Options] → [Language] to change display language.



4.1.2 Open List File / Save List File

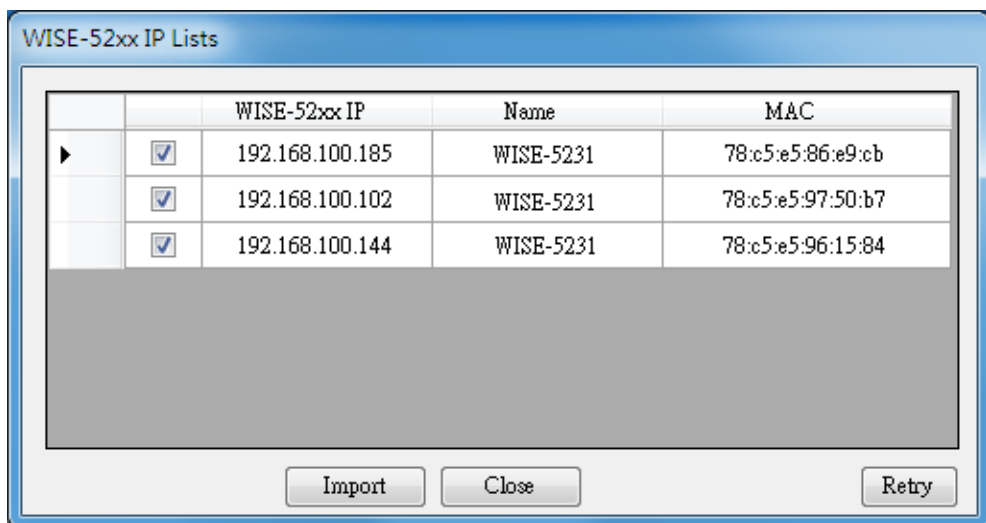
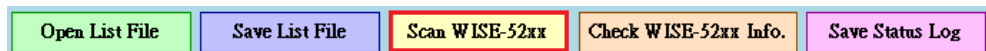
The user can click [Save List File] to save the edited WISE-52xx list data to local computer, and allows to reload these data later by [Open List File] function if required.



Please note: After performing [Open List File] function, the original edited list will be replaced by the newly loaded list file data. Please save your editing list before opening the list file.

4.1.3 Scan WISE-52xx

The user can perform [Scan WISE-52xx] operation to scan the existed WISE-52xx controllers under the same domain. After scanning operation is finished, the IP List of WISE-52xx controller will show the scanning result. User can click [Import] to import the selected WISE-52xx controllers to the WISE-52xx list.



4.1.4 Check WISE-52xx Info.

The user can use this function to get WISE-52xx system information, such as :

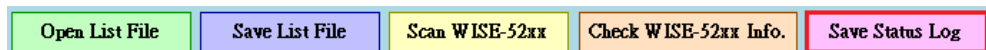
- (1) Nickname
- (2) Firmware Version
- (3) Available space on the MicroSD card

Index	Enable	IP	Password	Nickname	Version	Progress	Status
0	<input checked="" type="checkbox"/>	192.168.100.144	*****	WISE-5231	1.0.0	100 %	Available space on the microSD card : 1674.25 MB
▶▶	<input type="checkbox"/>						

Please note : It is recommended running this function before performing the operations in the [Function Area]. This function allows checking the validity of the WISE-52xx password and the available space on the microSD card.

4.1.5 Save Status Log

The user can use this function to save the status log after performing the functions in the [Function Area].



4.2 WISE-52xx List Area

4.2.1 Editing WISE-52xx List

Before performing the function in the [Function Area], it is required to edit the WISE-52xx list first. There are three ways to edit the list :

- (1) Launch [4.1.3 Scan WISE-52xx](#) function and import list data
- (2) Launch [4.1.2 Open WISE-52xx List File](#) function
- (3) Manually input the IP and Password of WISE-52xx controller

4.2.2 WISE-52xx List Operation

Right click on the WISE-52xx list table, and the operation dropdown list interface and the description of parameters are as the following :

Index	Enable	IP	Password	Nickname	Version	Progress	Status
0	<input checked="" type="checkbox"/>	192.168.100.144	*****	WISE-5231	1.0.0	100 %	Available space on the microSD card : 1674.281 MB
1	<input checked="" type="checkbox"/>	192.168.100.102	*****	WISE-5231	1.0.0	100 %	Available space on the microSD card : 1674.281 MB
▶▶	<input type="checkbox"/>						

Enable All : Enable all WISE-52xx controller on the list.

Disable All : Disable all WISE-52xx controller on the list.

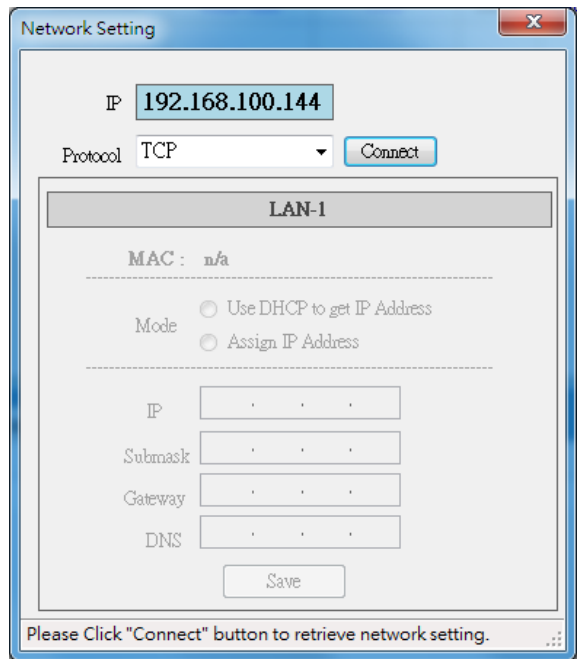
Clear All : Delete all list data.

Please note: Only the enabled WISE-52xx will run the specified function performed in the [Function Area].

4.2.3 The Network Setting of WISE-52xx

The user can click “Network Setting” to setup the detailed network settings of selected WISE-52xx controller, the setting interface is as following:

Index	Enable	IP	Password	Nickname	Version	Progress	Status
0	<input checked="" type="checkbox"/>	192.168.100.144	*****	WISE-5231	1.0.0	100 %	Available space on the microSD card : 1674.281 MB
1	<input checked="" type="checkbox"/>	192.168.100.102	*****	WISE-5231	1.0.0	100 %	Available sp... MB



Select the “Protocol” from the dropdown list and click “Connect” button to retrieve the detailed network setting of the selected WISE-52xx controller. After modifying the settings of LAN1, please click “Save” button to update the network settings of the selected WISE-52xx controller.

Please Note: if the “Protocol” is set as “TCP”, the login password is required in the WISE list area; however if “UDP” is set as the protocol, the login password is not required.

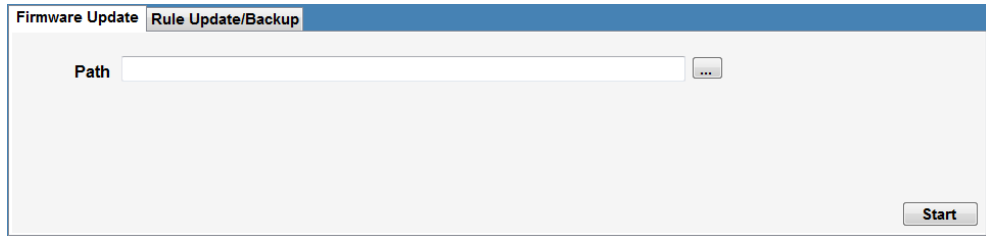
4.2.4 Launch Browser

The user can click “Launch Browser” button to launch the default browser, and the URL field will be filled as the IP address of the selected WISE-52xx controller automatically.

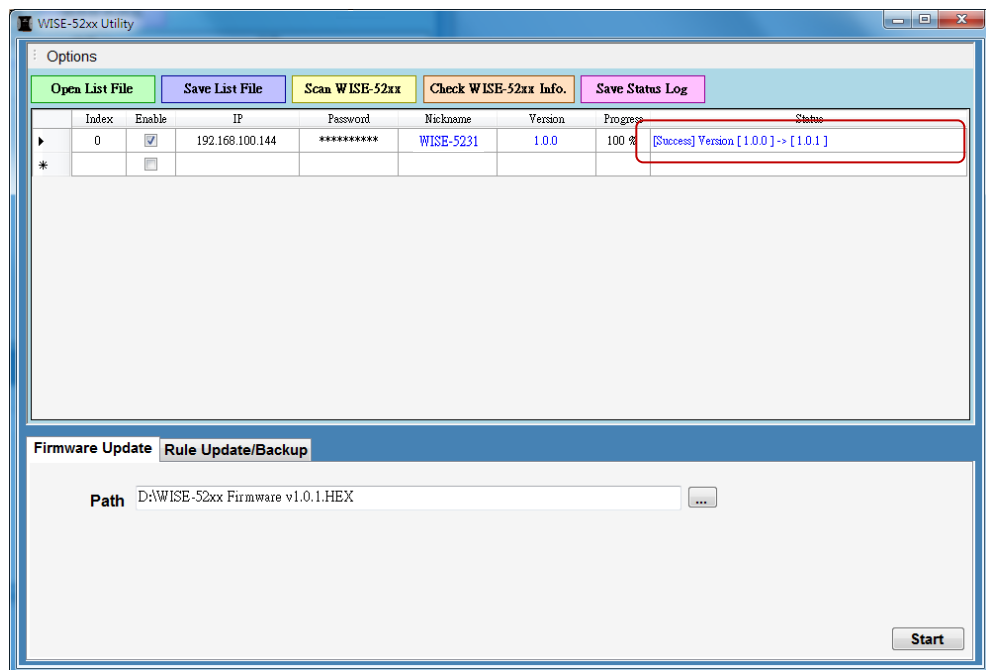
4.3 Function Area

4.3.1 Firmware Update

The user can use [Firmware Update] function to update firmware on multiple WISE-52xx controllers at the same time. The operation interface is as the following:



Please select the firmware path, and click start button to start the firmware update operation.



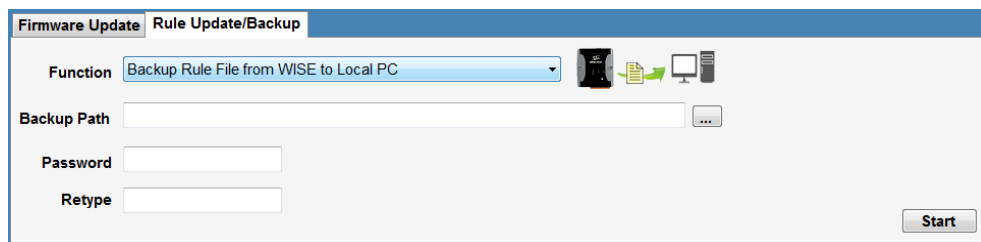
After the updating procedure is completed, the "Status" field will show the information for the user.

4.3.2 Rule Update/Backup

Rule Update/Backup includes four functions :

- **Backup Rule File from WISE to Local PC**

The user can use [Backup Rule File from WISE to Local PC] function to backup the WISE-52xx rule file from WISE-52xx controller to local PC. The operation interface and the description of parameters are as the following :



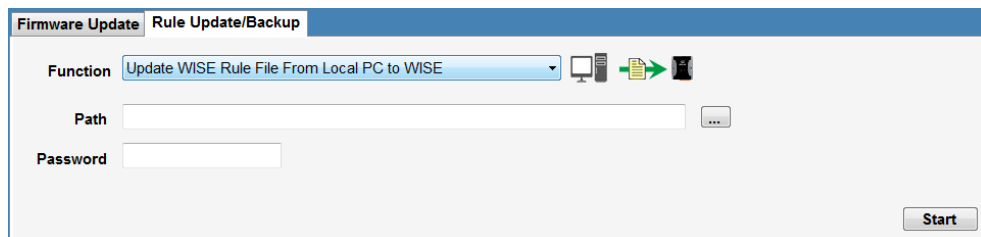
Backup Path : Please select the backup path.

Password : Please input password to protect the backup rule file.

Please note : The backup rule file will be saved in ZIP format; it is required to input the password previously set to unzip the file to avoid unauthorized access to the file.

● **Update WISE Rule File From Local PC to WISE**

The user can use [Update Rule File From Local PC to WISE] function to update rule file to multiple WISE-52xx controllers from the local PC. The operation interface and the description of parameters are as the following :

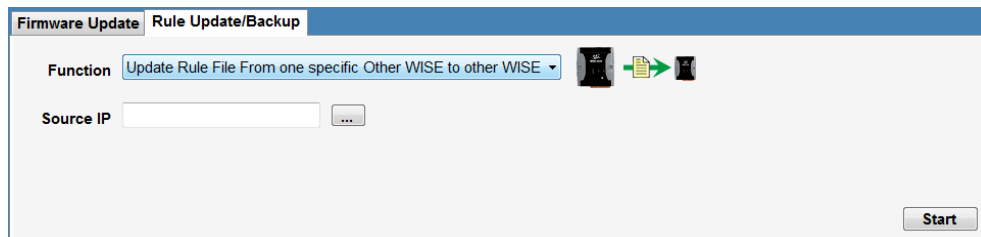


Path : Please select rule file path.

Password : Please input the password of the rule file.

● **Update Rule File From one specific WISE to other WISE**

User can use [Update Rule File From one specific WISE to other WISE] function to update the rule file from one specific WISE-52xx to multiple WISE-52xx controllers. The operation interface and the description of parameters are as the following :



Source IP : Please Click [...] to select the source WISE-52xx on the WISE-52xx IP List for the rule file update operation.

- **Backup Debug File**

When the user encounters difficulty in rule settings and would like to send back the rule file to ICP DAS for debug or analysis, please use this function to backup the rule file to the local PC and send this file to ICP DAS. This Debug file will be encrypted for safety reasons and will be decrypted later by ICP DAS for further analysis

