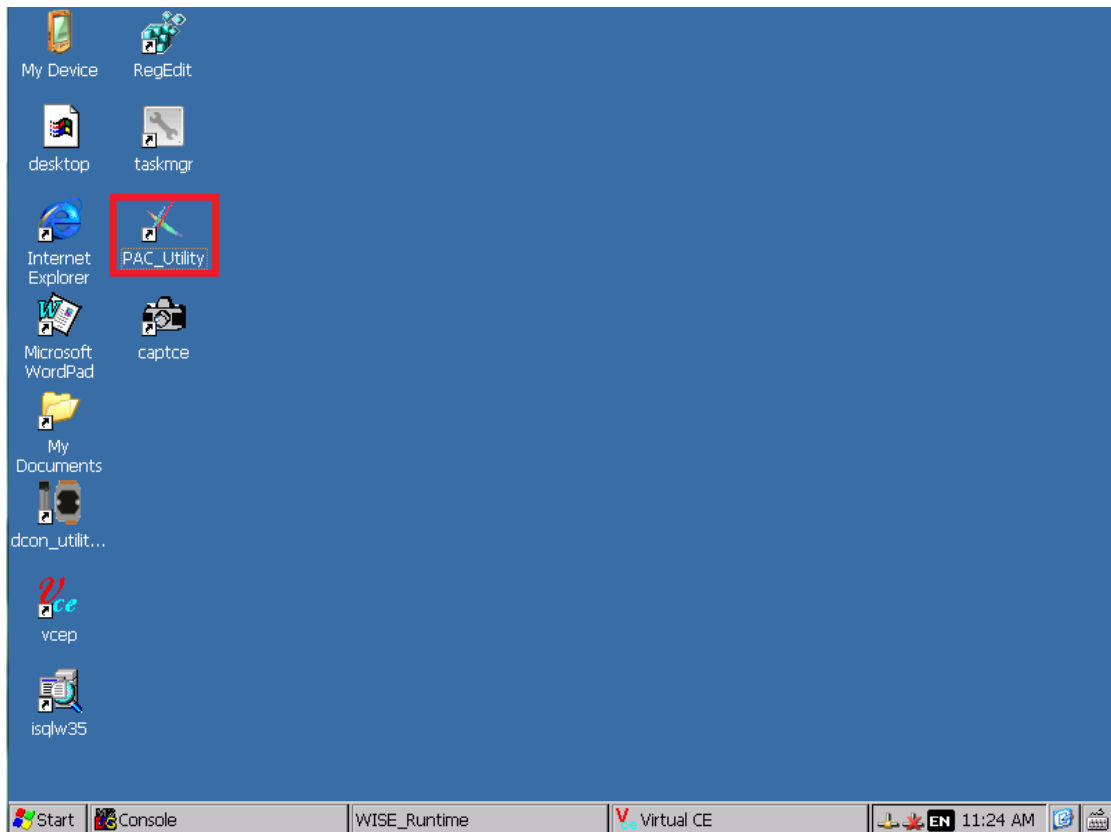


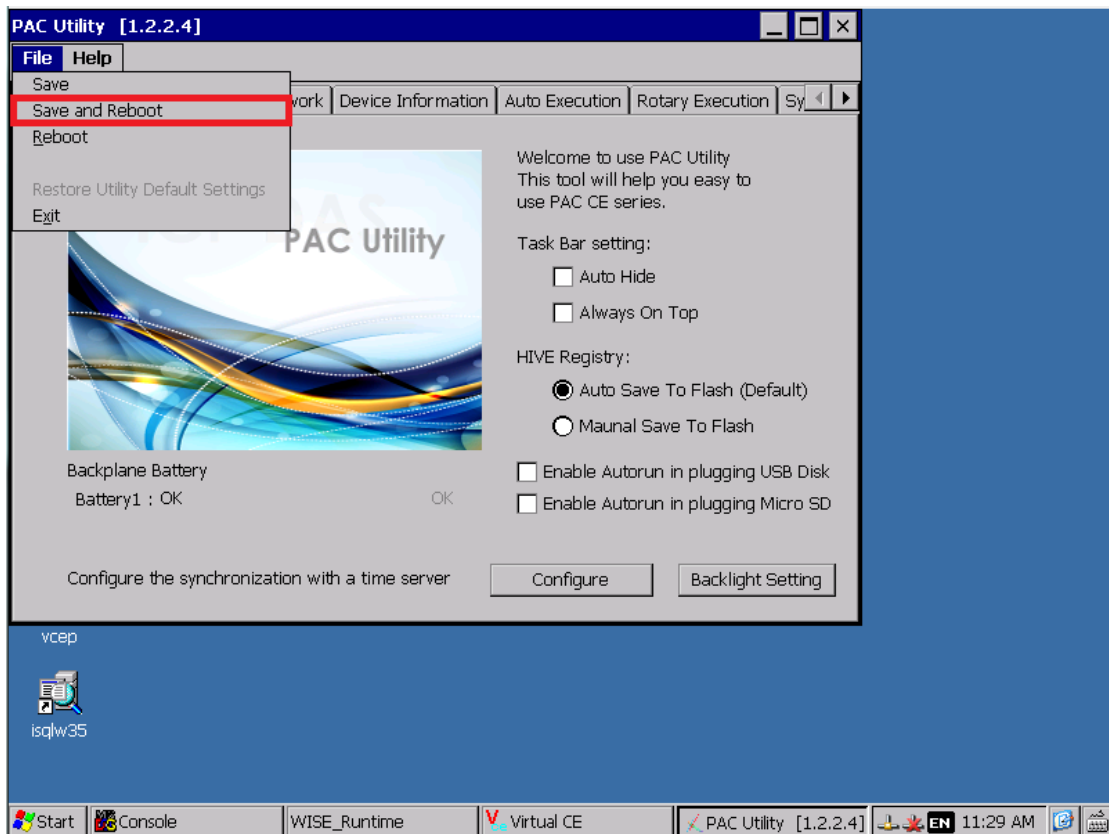
WISE-52xx / 224x OS Setting Recovery

This document will be helpful when WISE-52xx / 224x could not finish booting.

1. Connect the WISE module with a screen and a mouse.
2. Switch the rotary switch to "1" and reboot.
3. If the WISE module can finish booting, please follow the steps below to rewrite the OS settings. Otherwise, please check the document ["WISE-52xx update OS and install firmware steps"](#) to reinstall OS and WISE firmware.
4. Execute the "PAC_Utility" program on the desktop.



5. Switch the rotary switch to "0", and click "Save and Reboot".



6. If the WISE module can finish booting and WISE firmware works fine, the recovery procedure is done. Otherwise, please check the document ["WISE-52xx update OS and install firmware steps"](#) to reinstall OS and WISE firmware.