



Quick Start for WISE-52xx Series

September 2016, Version 1.0.3

Welcome!

Thank you for purchasing WISE-52xx – the Web-based Intelligent IOT controller for remote monitoring and control application. This Quick Start will provide you with minimum information to get started with WISE-52xx. It is intended for use only as a quick reference. For more detailed information and procedures, please refer to the full user manual on the CD included in this package.

What's In the Box?

In addition to this document, the package includes the following items:

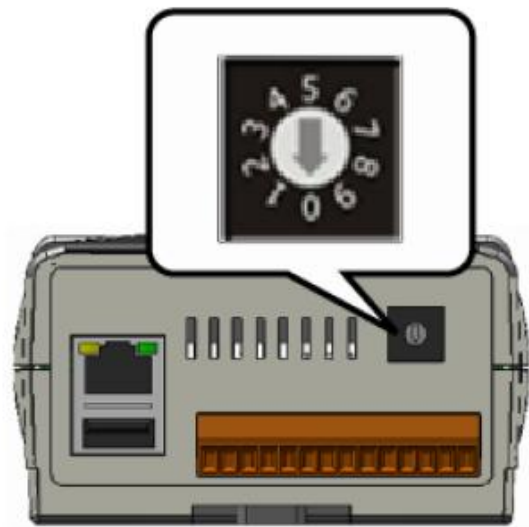


Technical Support

- **WISE-52xx User Manual**
 - CD:\WISE-52xx\document\user manual
 - <http://wise.icpdas.com/Download.html>
- **WISE-52xx Website**
<http://wise.icpdas.com>

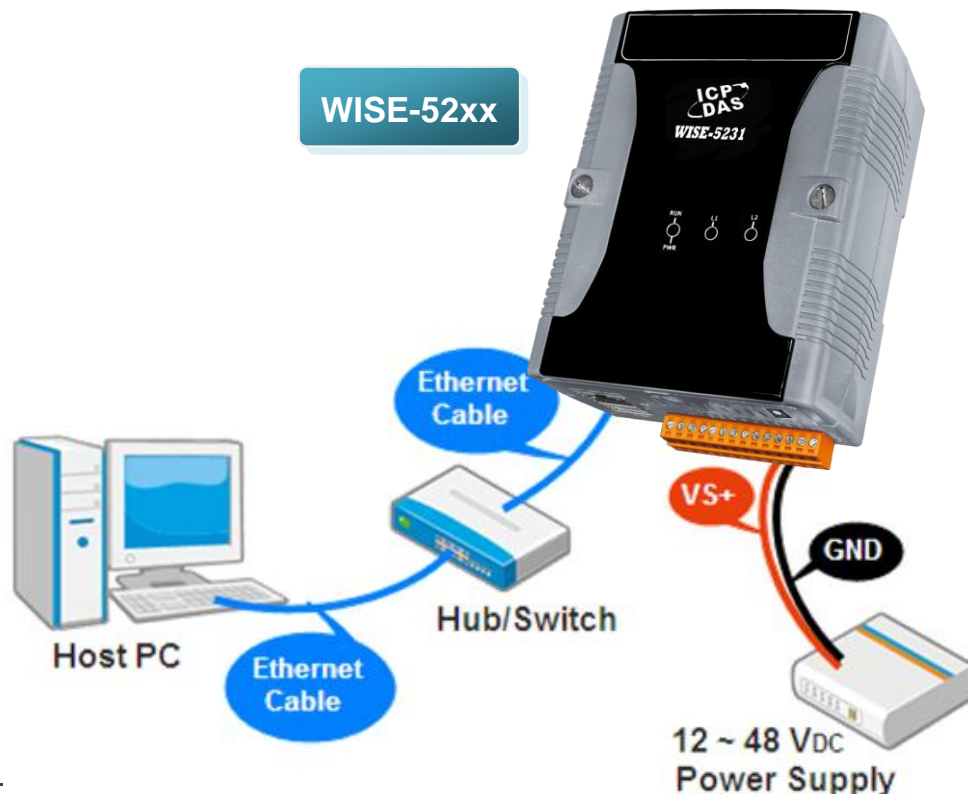
1 Configuring the boot mode

Before starting WISE-52xx at the first time, be sure that the switch is placed in the "0" position.



2 Connect to PC, Network and Power

The WISE-52xx is equipped with an RJ-45 Ethernet port for connection to an Ethernet hub/switch and PC. You can also link directly the WISE-52xx to PC with an Ethernet cable. **After power is connected, please wait one minute for WISE-52xx start-up procedure. When the "RUN/PWR" light starts flashing, it represents the boot is complete.**



3

Using Browser to Assign a New IP

The WISE-52xx is an Ethernet controller, which comes with a default IP setting; therefore, you must first assign a new IP setting to the LAN1 port of WISE-52xx. The factory default IP settings of WISE-52xx are as follows:

| Item | Default |
|-------------|--------------------------------------|
| IP Address | 192.168.255.1 |
| Subnet mask | 255.255.0.0 |
| Gateway | 192.168.0.1 |
| DNS Server | 8.8.8.8 (Default: Google DNS Server) |

Follow the following steps for WISE-52xx new IP setting:

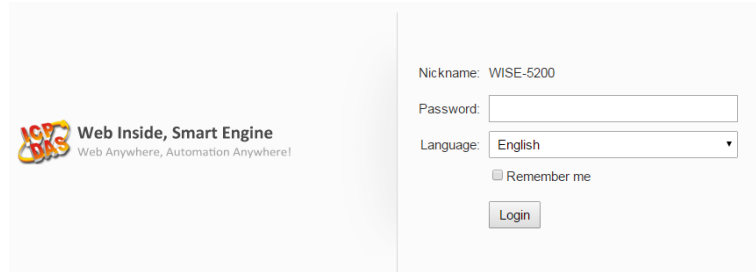
Step1: Change the PC's IP setting as following.

- IP: 192.168.255.10
- Subnet mask: 255.255.0.0
- Gateway address: 192.168.0.1

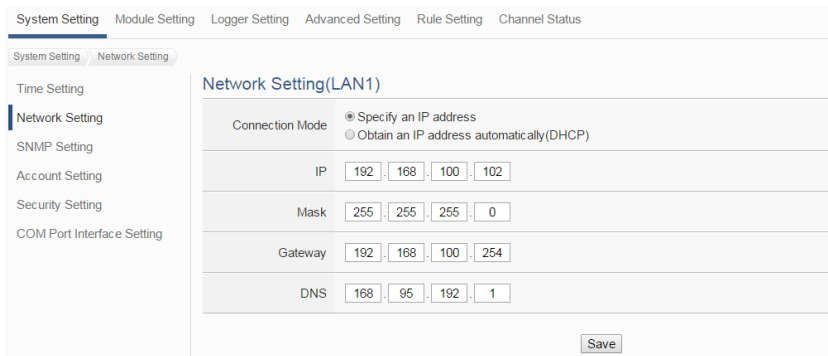
Step2: Make sure the PC and WISE-52xx is connecting through Ethernet.

Step3: Open a PC side browser, and type in the URL address (<http://192.168.255.1>) of the WISE-52xx to connect the Web Server in WISE-52xx.

Step4: Use default Administrator password “**Admin**” to login the system.



Step5: Please follow the sequence **【System Setting】** → **【Network Setting】** → **【Network Setting(LAN1)】** to change the IP setting of WISE-52xx.



Step6: After complete the IP setting, please save it, and then the new IP setting will take effect.

4

Go to WISE-52xx Web Site to edit Control Logic

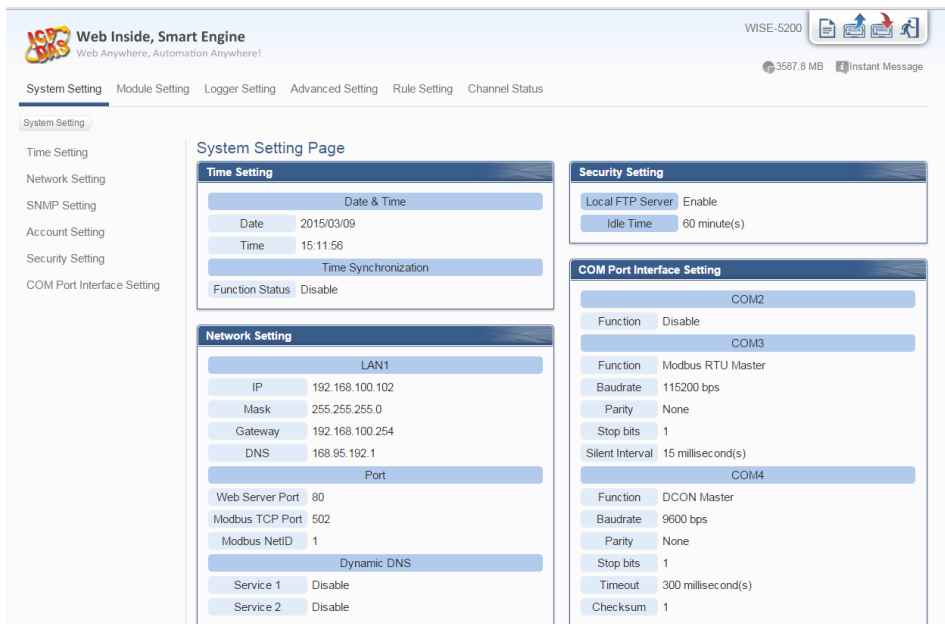
Please follow the steps below to implement IF-THEN-ELSE control logic on ICP DAS WISE-52xx controllers:

Step 1: Open a browser, and type in the URL address of the WISE-52xx

Open a browser and type in the URL address(The new IP setting) of the WISE-52xx in the address bar. Make sure the IP address is accurate.

Step 2: Get on the WISE-52xx web site

Get on the WISE-52xx web site. Login with the default password “**Admin**”. Implement the control logic configuration in the order: 【Module Setting】 → 【Advanced Setting】 → 【Rule Setting】 → 【Save】 , then complete the IF-THEN-ELSE rule editing.



Step 3: For more detail information, please refer to WISE-52xx User Manual



WISE-52xx 系列快速安裝指南

September 2016, Version 1.0.3

歡迎使用 WISE-52xx 快速安裝指南

感謝您購買 WISE-52xx Web-based 智慧型物聯網 I/O 控制器。本『快速安裝指南』提供 WISE-52xx 安裝入門所需資訊，如需更詳細的安裝及使用說明，請參閱 WISE-52xx 使用手冊。

產品內容

除了本『快速安裝指南』外，此產品內容還包括以下配件：



WISE-5231

或



WISE-5231M-3GWA

WISE-52xx 模組



軟體工具
光碟



microSD 卡



螺絲起子
(1C016)



GSM 天線
(ANT-421-04)

僅提供

WISE-5231M-3GWA

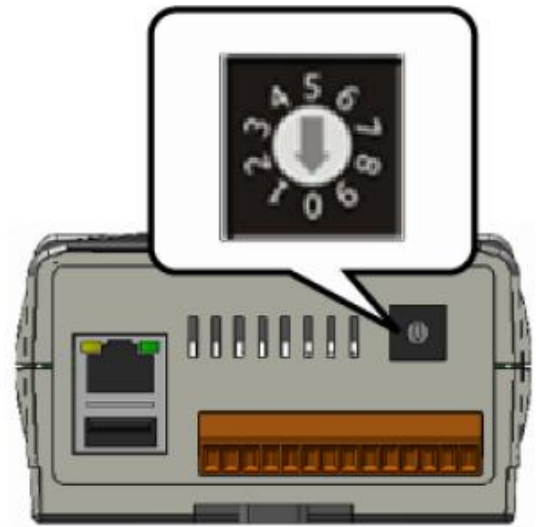
技術支援

- WISE-52xx 使用手冊
 - CD: WISE-52xx\document\user manual
 - <http://wise.icpdas.com/Download.html>
- WISE-52xx 產品網頁
<http://wise.icpdas.com>

1

檢視啟動模式

在第一次啟動 WISE-52xx 前，請先確認旋轉式開關的位置在“0”。



2

連接 PC 主機、網路及電源

WISE-52xx 配有標準的網路接口 RJ-45，可透過網路集線器/交換器與 PC 連接，也可直接連到 PC 的網路接口。接上電源後，WISE-52xx 開機程序須等待約一分鐘，待"RUN/PWR"燈開始閃爍則代表開機完成，可進行連線與設定。



3

啟動瀏覽器設定 WISE-52xx 的 IP 位址

WISE-52xx 在出廠時會統一預設網路設定值，使用者可以依照下列步驟自行變更網路設定。WISE-52xx 的網路出廠預設值：

| 項目 | 預設值 |
|--------------------|--------------------------------|
| IP 位址 | 192.168.255.1 |
| 子網路遮罩(subnet mask) | 255.255.0.0 |
| 通訊閘(gateway) | 192.168.0.1 |
| DNS Server | 8.8.8.8(預設為 Google DNS Server) |

設定步驟

步驟1：將 PC 的網路設定更改為與 WISE-52xx 相同網路區段。例如：

- IP：192.168.255.10
- Subnet mask：255.255.0.0
- Gateway address：192.168.0.1

步驟2：確認 WISE-52xx 與 PC 已透過網路正確連接。

步驟3：開啟 PC 端的瀏覽器並於網址列輸入 <http://192.168.255.1>。

步驟4：輸入管理者預設密碼“Admin”進行登入。



步驟5：登入成功後至【系統參數設定】→【網路設定】→【網路設定(LAN1)】，根據實際網路環境更改網路設定。



步驟6：儲存成功後將 WISE-52xx 連接至實際網路環境。

4

前往 WISE-52xx 網頁進行邏輯規則設定

使用者透過 WISE-52xx 所提供的網頁，只需使用滑鼠點選設定，即可完成控制器上的 I/O 模組連接與工作邏輯的規劃。

步驟一：開啟瀏覽器，填入 WISE-52xx IP 作為瀏覽器的 URL 位址

開啟電腦上的瀏覽器，輸入 WISE-52xx 的 IP 作為 URL 位址(如有重新設定 IP，請確認所輸入 IP 是否正確)。

步驟二：進入 WISE-52xx 的設定頁面

進入 WISE-52xx 所提供的參數設定頁面，使用預設密碼“Admin”登入後，僅需依照首頁上的設定流程：**【模組設定】→【進階功能設定】→【邏輯規則設定】→【寫入設定】**，即可完成 WISE 控制器的邏輯規則編排。



步驟三：設定流程中的細節，請參照 WISE-52xx 操作手冊